

BEST COPY AVAILABLE

SEE C.E.S.

66B-43610

R A/c 1 - 4

NO DEFERRING REQ
MADE FOR REMOVAL OF WATER

MADE FOR AUTOMATICALLY OPERATED

BE ± .12 EXCEPT WHERE SHOWN OTHERWISE.

REFERENCE ONLY
THIS DOCUMENT WILL
NOT BE KEPT UP

CONTROL Dwg

12-2		UNIT ASSY							
	-2	BOX ASSY							
		ACCENMENT					66B-43600	SEE NOTE	CL66B
NUMBER	DASH NO.	DESCRIPTION	SIZE	ZONE	MATERIAL SPEC	UNIT WT.	NEXT ASSY	QTY PER A/C	MODEL
FINISHES (EXCEPT AS OTHERWISE) ± 1/2° LS— PLACES ± .00 PLACES ± .010 IE FINISH XCEPT AS NOTED URFACE FINISH S 30)	DRAFT	ASPATERSON	11 SEP 58	CANADAIR LIMITED—MONTREAL			SECTION NO.		
	CHECK								
	GR. LDR.	P. 164							
	STRESS	R. 106	17 OCT 58						
	WEIGHT	A 50SLING	19 1/2						
	SECT. CHIEF	GREENIANS	20 OCT 58						
	APPR.								
43 1/1	APPR.				REFRIGERATOR-			66B-43610	

BEST COPY AVAILABLE

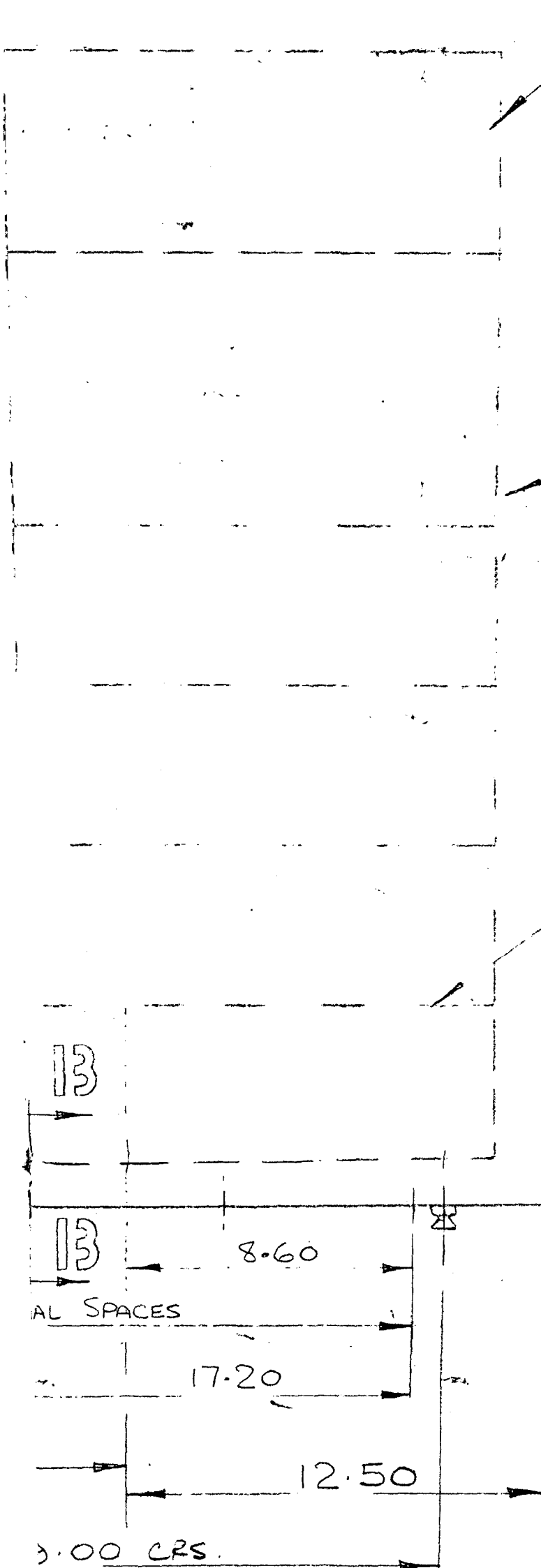
IDE METAL
F-K
4 DOZ APPROX.)

505 C.E.S.

BEST COPY AVAILABLE

66B - 43610

STOCK DISPOSITION SYMBOLS								
1 REWORK			2 SCRAP			3 NONE		
REVISIONS			DISP.	REASON	EFF.	CLASS	APPD.	
							DES.	STR.
NC	1. READ IN CONT. WITH CES 320 ISSUE 2 WAS "READ IN CONT. WITH CES 320"		3	AS PATERSON. ADDITIONAL INFORMATION	RECORD CHANGE	3		
	2. DIM 19.75 WAS 17.0 DIM 10.75 $\pm .010$ WAS 8.00 $\pm .010$. DIM 16.75 $\pm .010$ WAS 14.00 $\pm .010$. IN GEN NOTES "1 REQ, AC. FOR CL 663 (27 SEAT) ONLY" WAS "1 REQ, AC. FOR 5 A/C ONLY"		3		RECORD CHANGE	3		
A	1. 35.4 DIM WAS 36.25 DETAIL A REMOVED FROM F/D ON LOWER RH. VIEW 4 PICKUP SCREWS ADDED. ATTACHING SCREWS REMOVED FROM SIDES OF FRIDGE. SECTION BB ADDED. NOTE 2. DETAIL 'C' ADDED. REV. IN CONT. WITH CES 406 (ISSUE 1) CES 320 ISSUE 2		3	J PANTON. ADDITIONAL INFORMATION	RECORD CHANGE	3		
B								



- FOR DOOR HANDLE REQUIREMENTS

35.50

- SHELVES (1/2 MAX. THICKNESS)

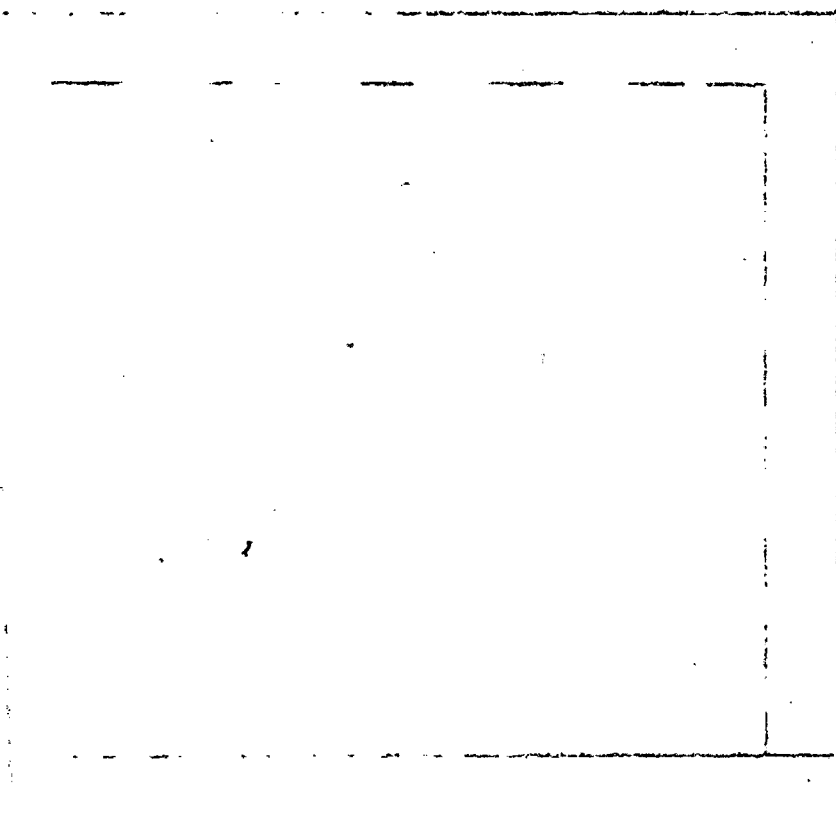
* 1 REQ / A/C FOR
DEFROSTING
PROVISION TO
AS NECESSARY
PROVISION TO
INTERIOR LIGHT
DIMENSIONS T

CONTROL DRAINING
WITH C.E.S. 406 ISSUE 1

(A2)

		44-4
R.H.	L.H.	PAR
NO. REQ./ASSY		
HEAT TREAT		TO NC AN DE
FINISH SPEC.		M/ 12/ V PE
SIZE R		D/ SC

BEST COPY AVAILABLE



AT FIVE
- OPENING
0°

OUTBOARD



FORWARD



25.0

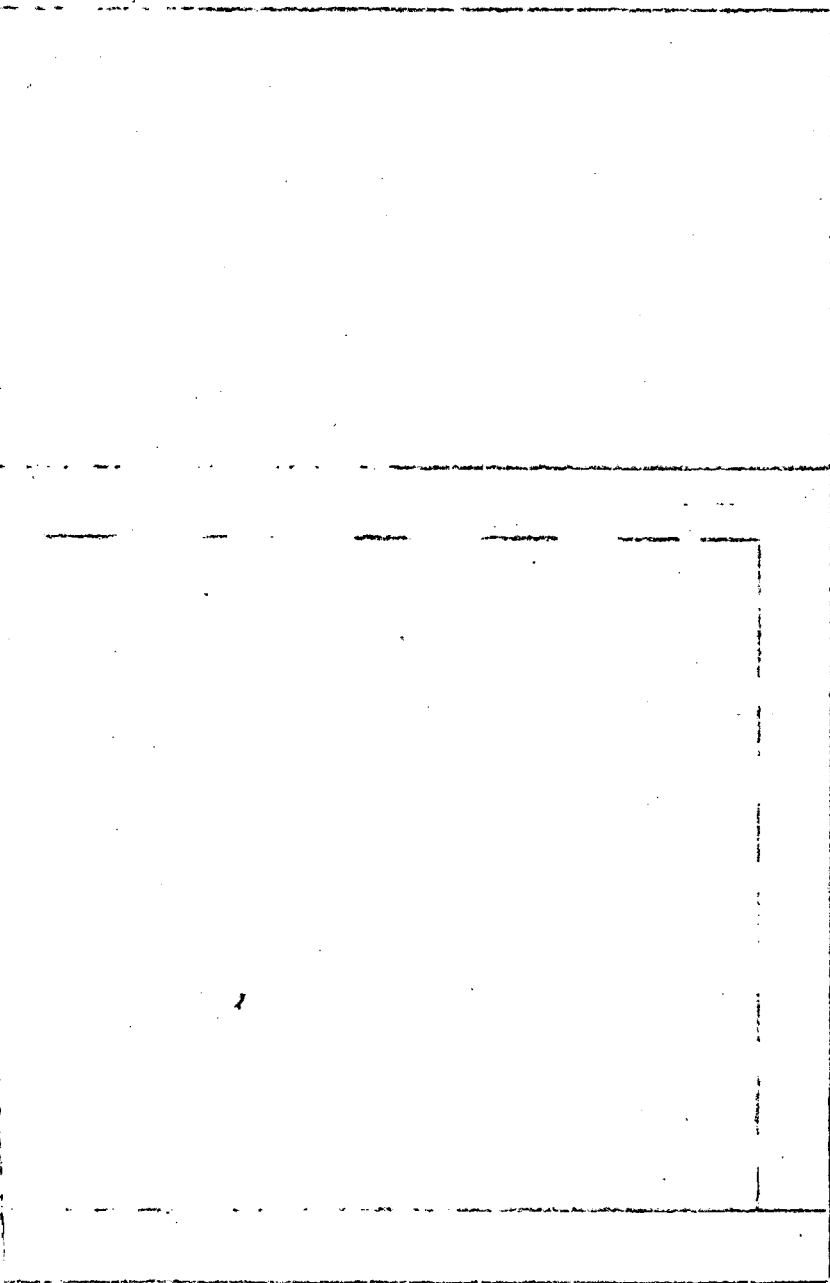
- FREEZING COMPARTMENT TO INCORPORATE
TRAYS (ON RACKS) WITH PROVISION FOR
EASY EXTRACTION OF ICE CUBES

- FOR DOOR HANDLE REQUIREMENT

35.50

BEST COPY AVAILABLE

-UNIT ASSY MUST LIE
WITHIN THIS ENVELOPE



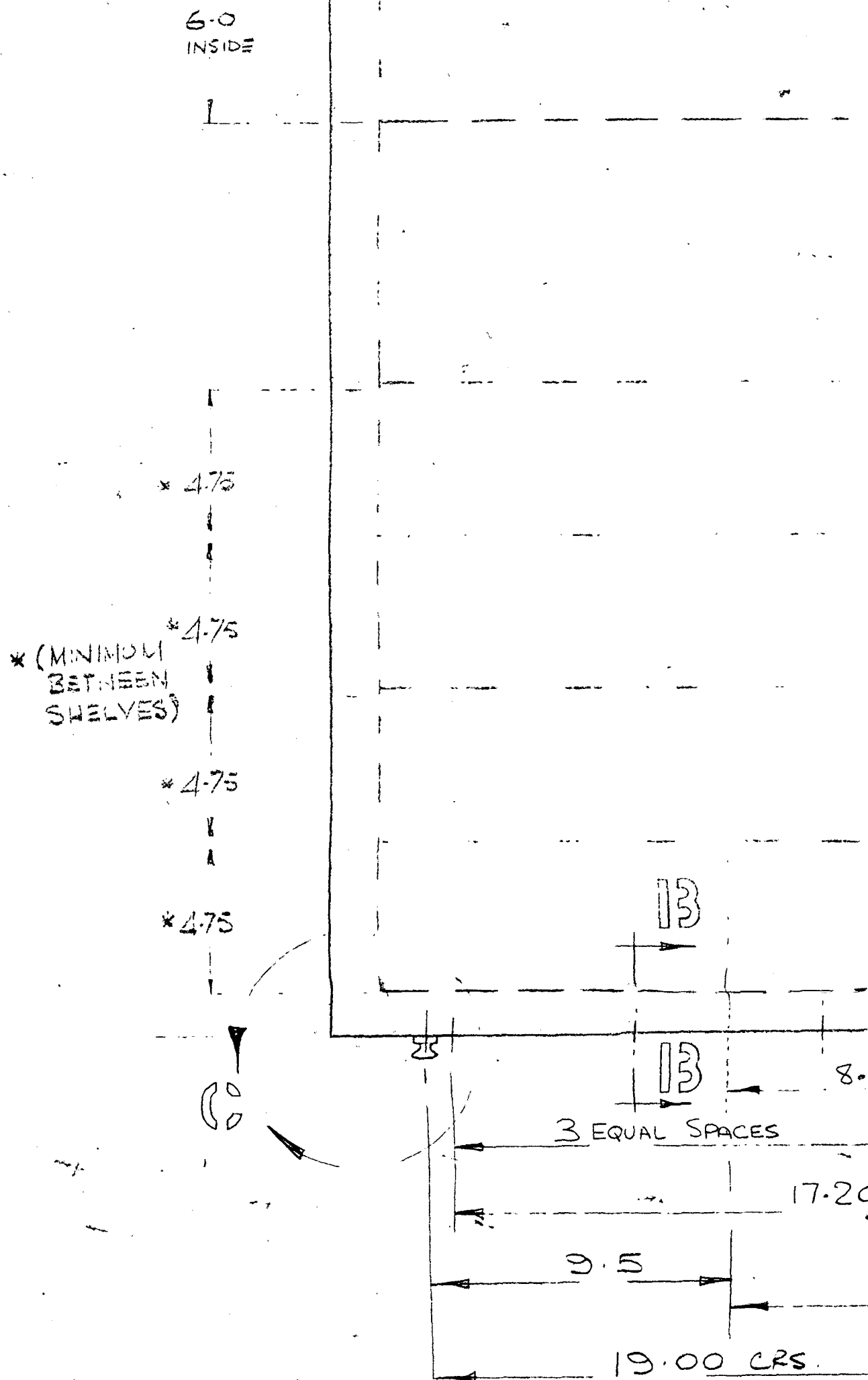
10°
OPENING

OUTBOARD

FORWARD

Door.

BEST COPY AVAILABLE



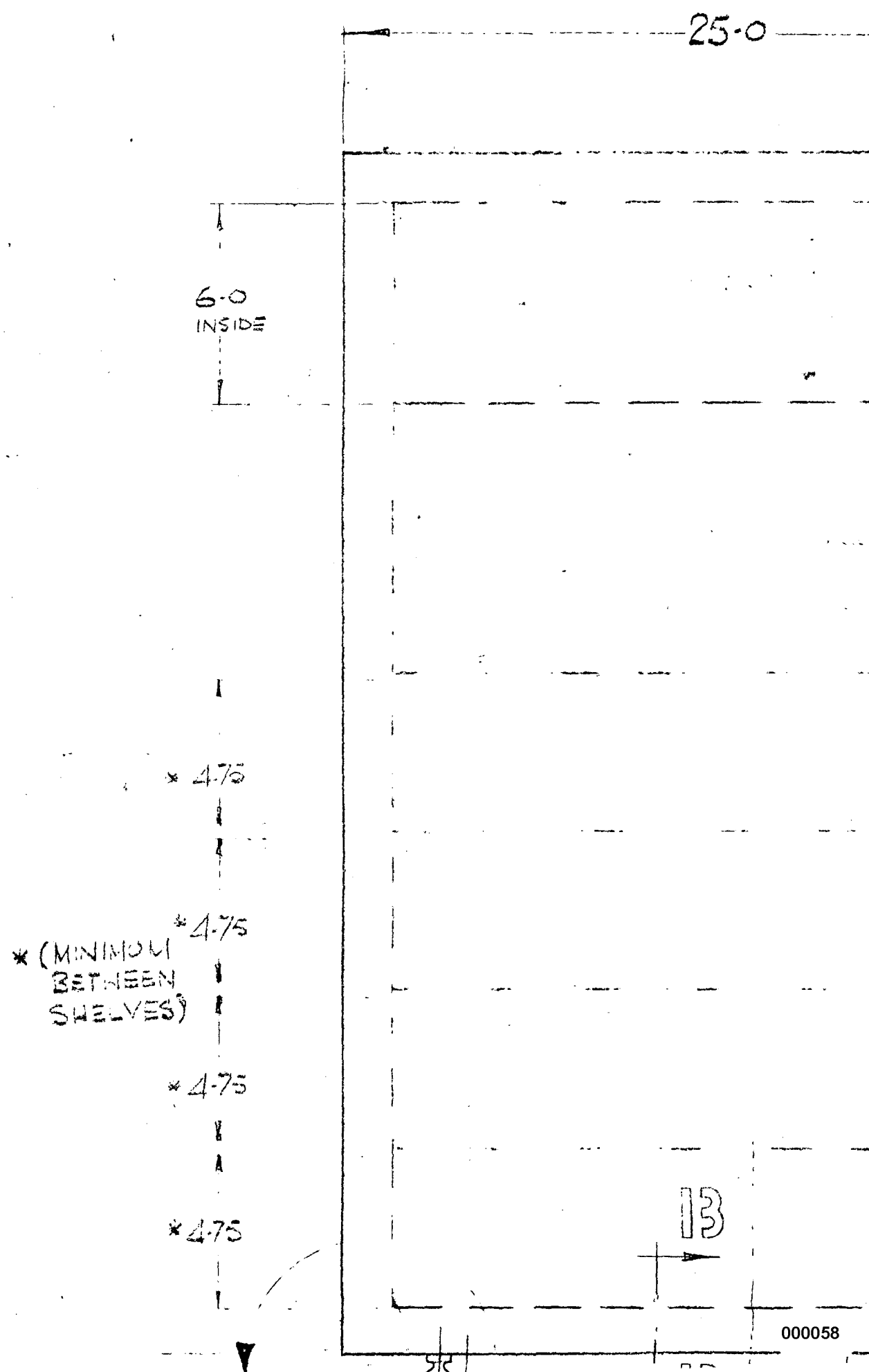
SPECIFICATION CONTROL
READ IN CONJUNCTION WITH C

BEST COPY AVAILABLE

(REF)

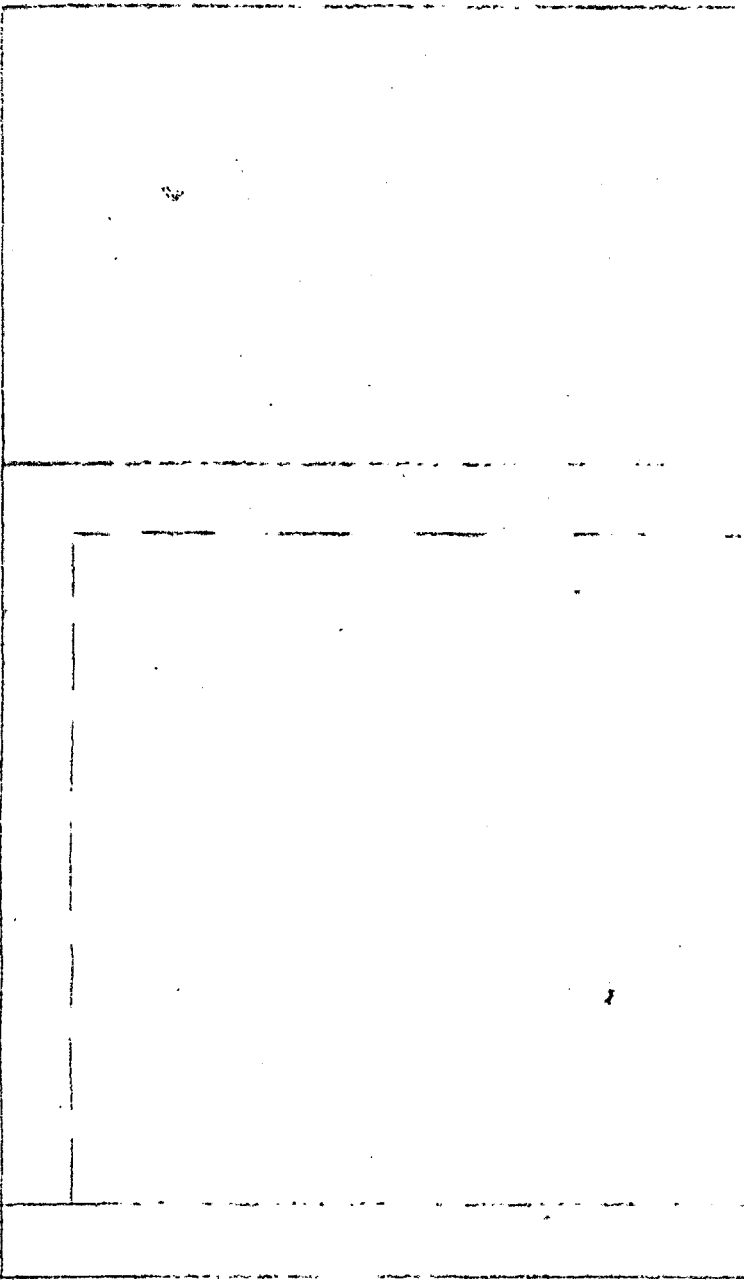
DOOR MUST NOT FALL
FORWARD INTO OPENING
THROUGH 90°

- FREEZING COMPART
DOOR.



BEST COPY AVAILABLE

1.25 (REF)



2 (REF)

DON'T MUST NOT FALL
PARTIAL WITH OPENING
THROUGH 90°

BEST COPY AVAILABLE

12.0
MAX
(REF)

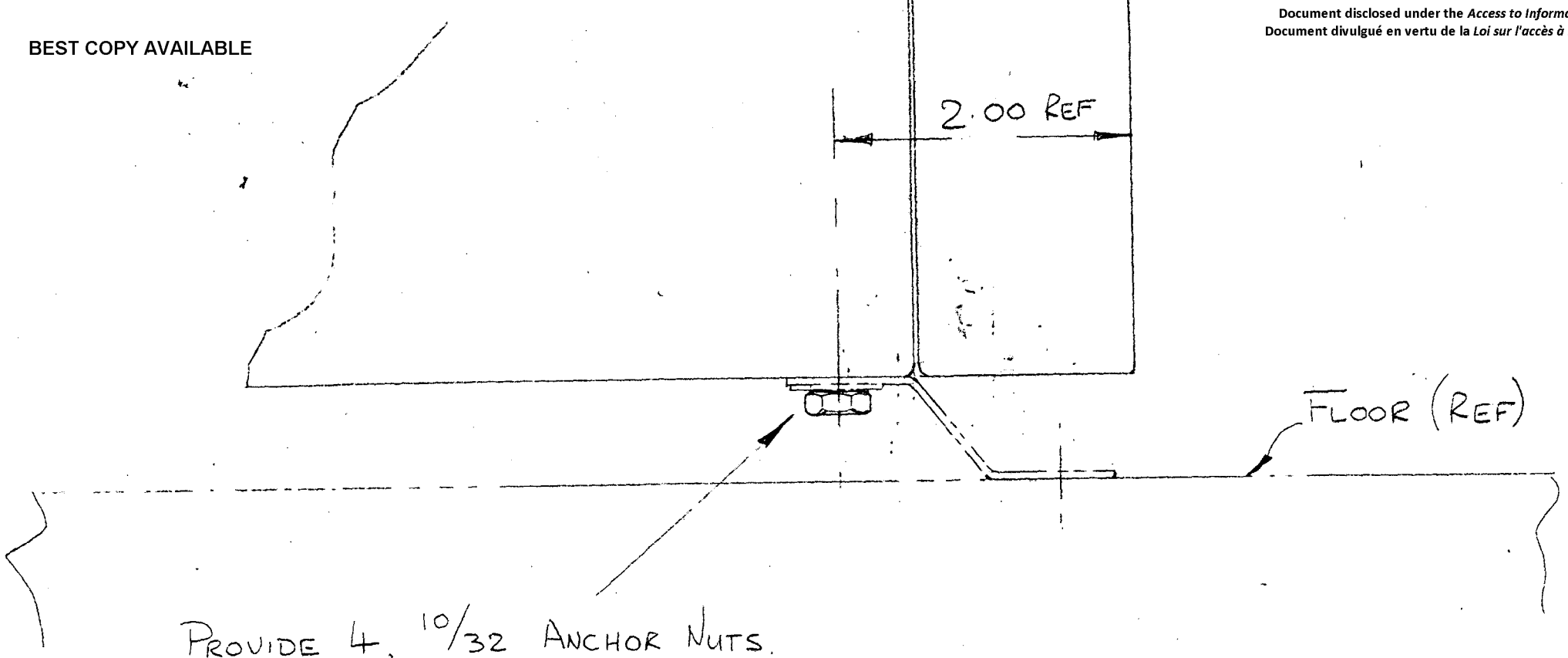
TYPICAL WALL
THICKNESS 12" MAX

1.50

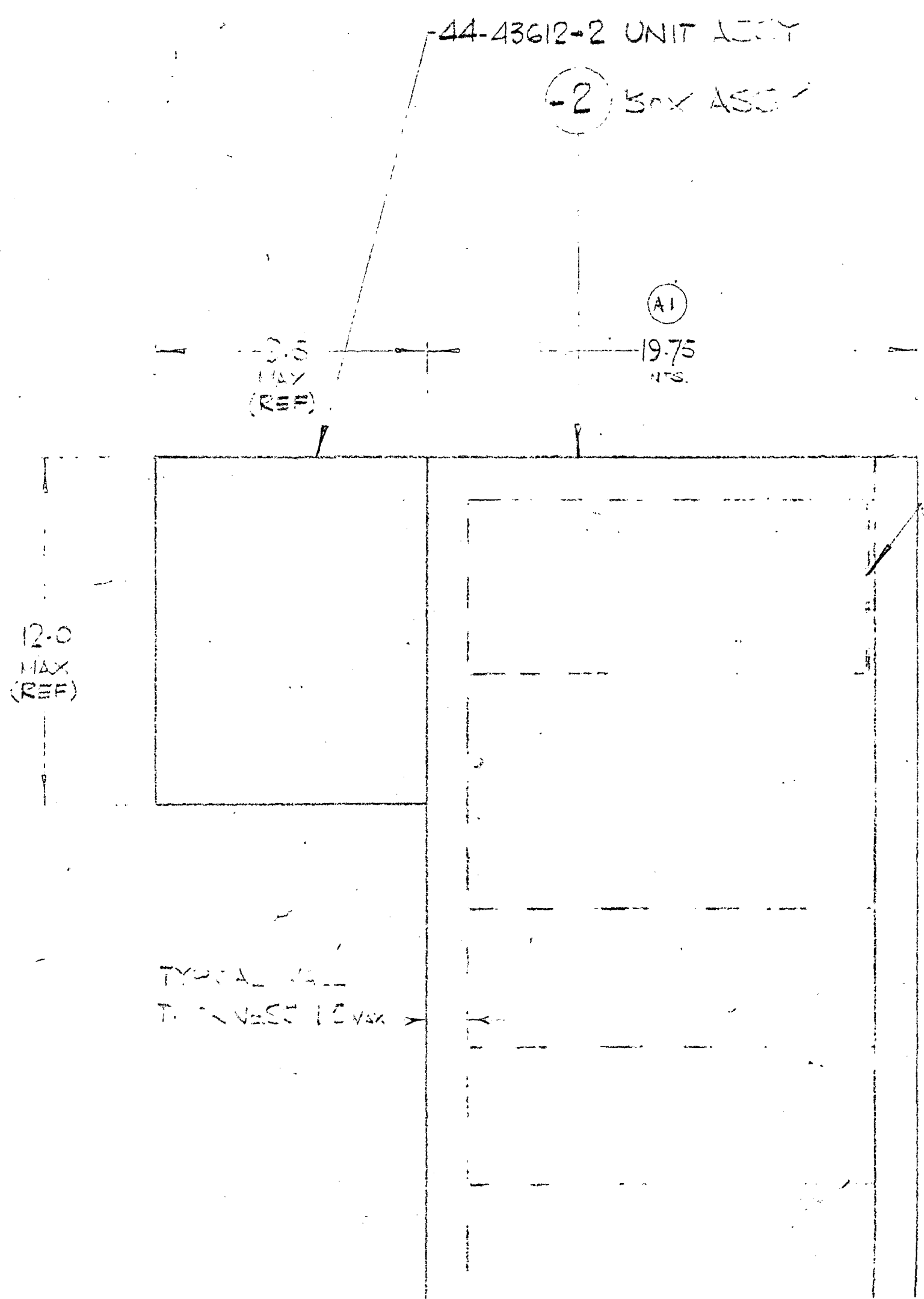
15.50 CRS.
NTS.

2.00

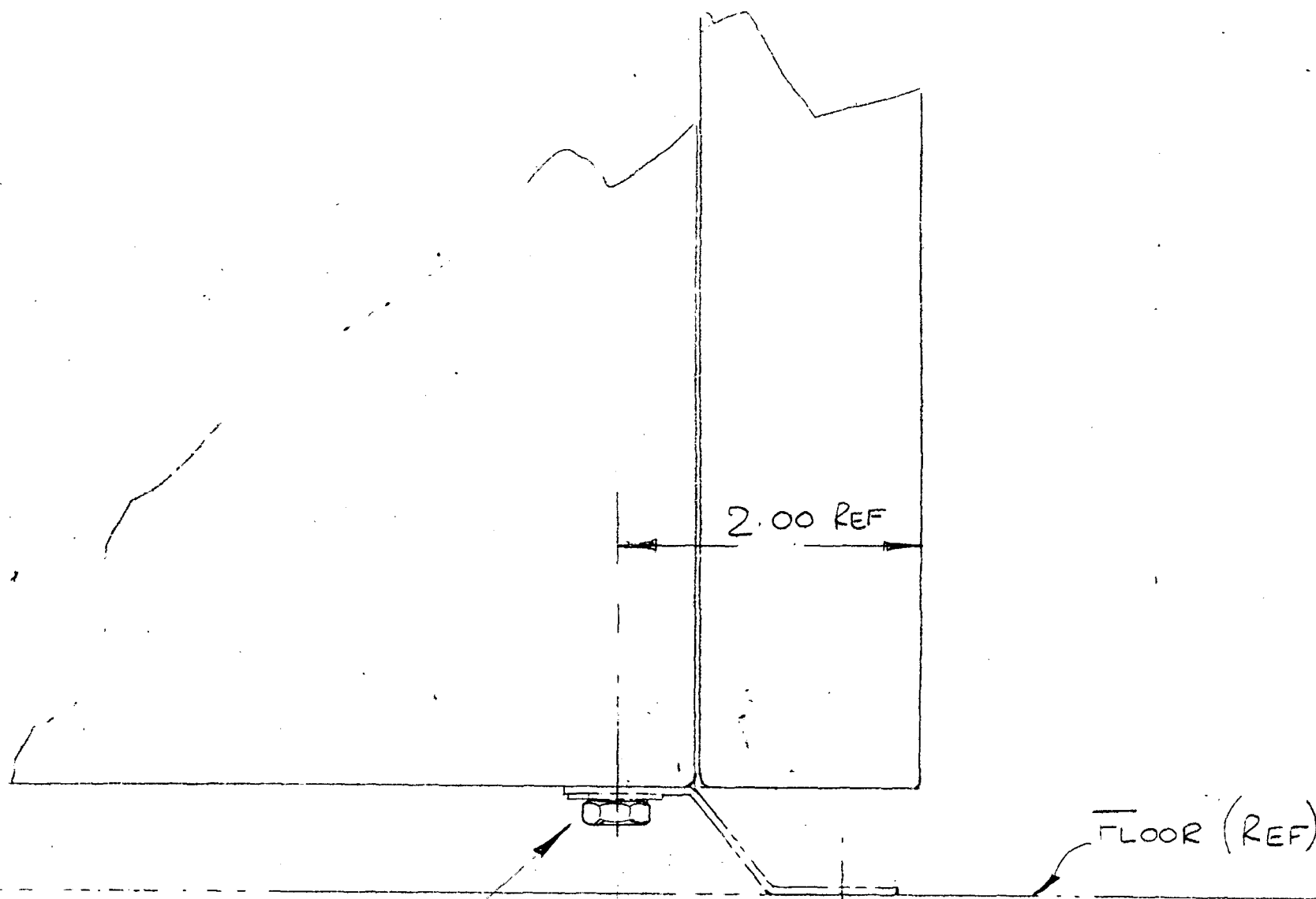
+ 0°-0'
- 0°-30'



SECTION 13 13



BEST COPY AVAILABLE



PROVIDE 4, 10/32 ANCHOR NUTS.

SECTION 13 13

-44-43612-2 UNIT L.C.Y

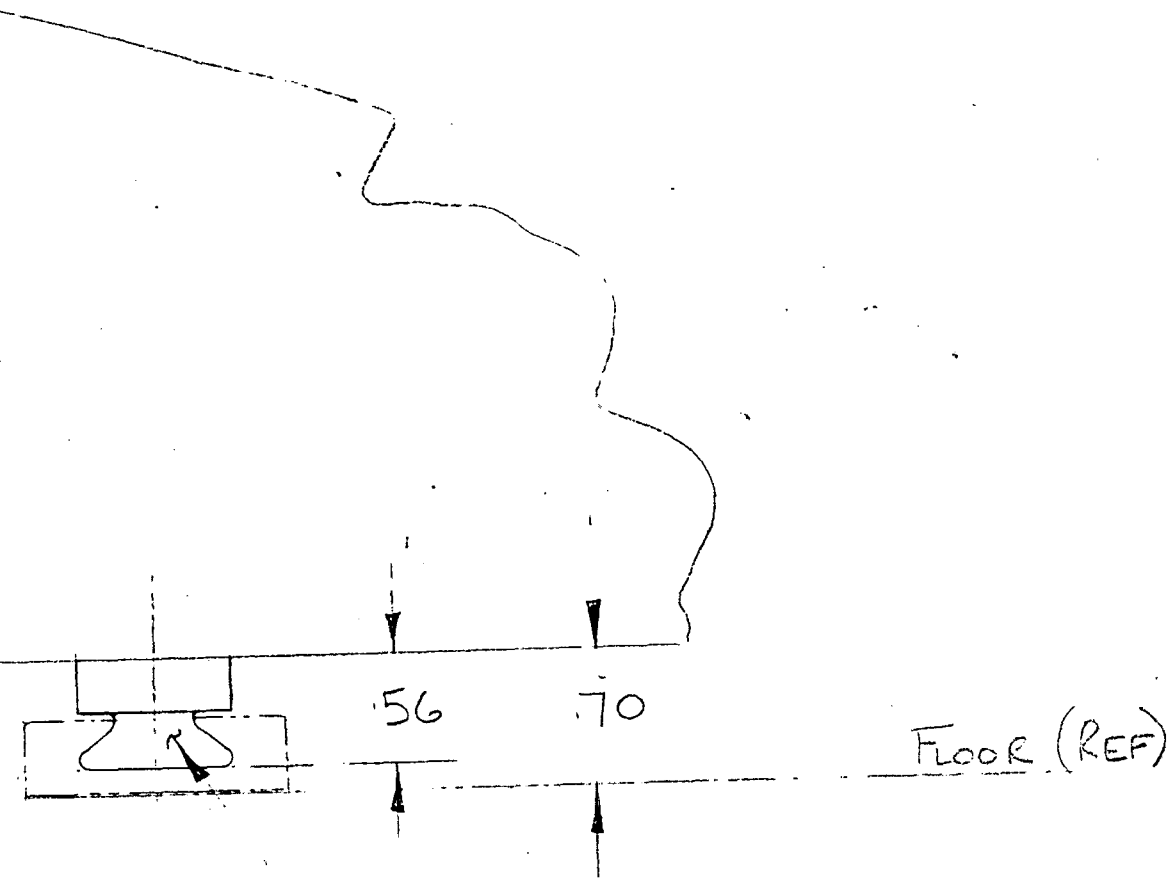
(-2) BOX ASSY

(A1)

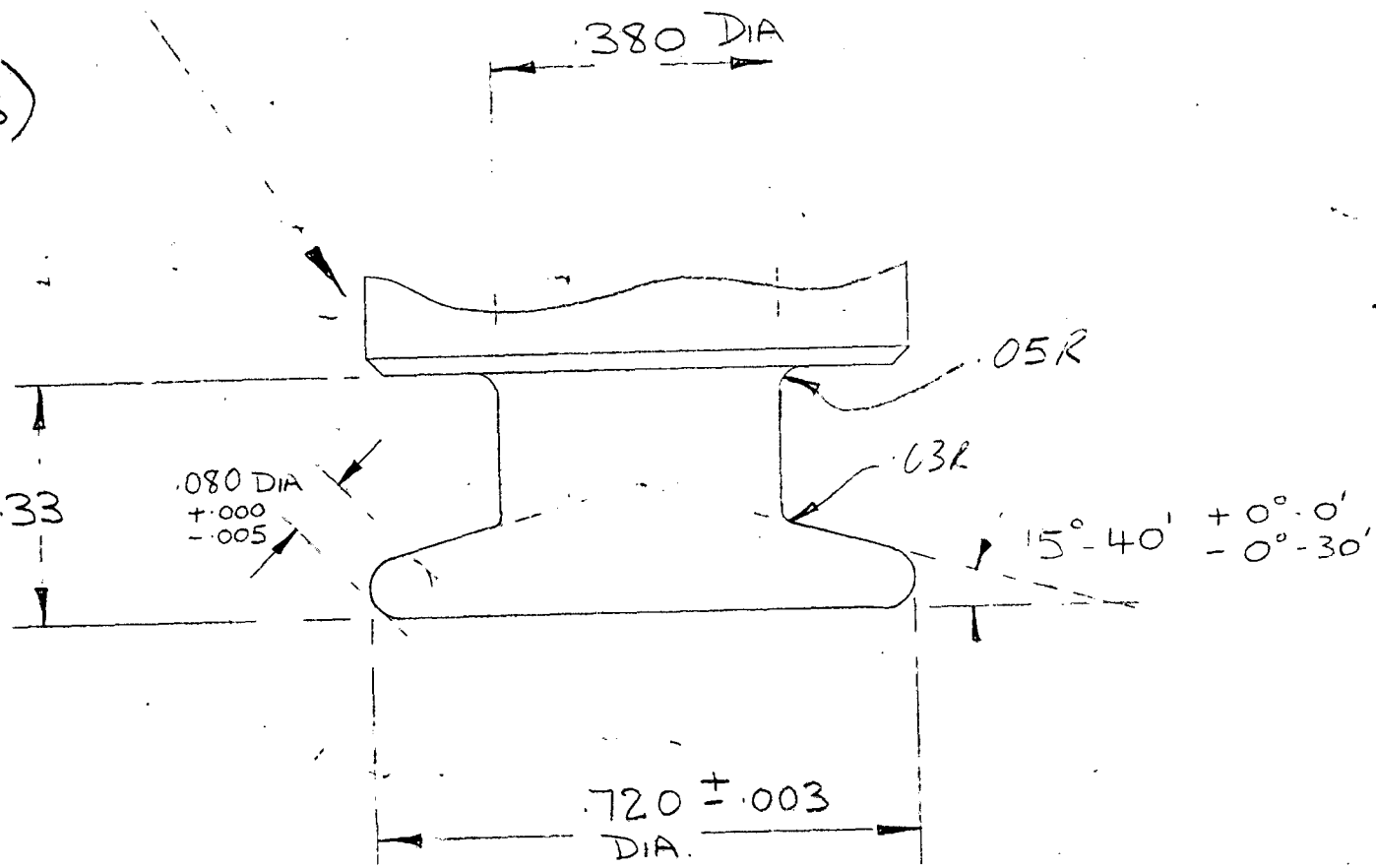
2.5
18Y
(REF)

19.75
N.T.S.

12-0
MAX
(REF)



RAIL (80
4 PLACES)



DETAIL OF STUD.
(DESIGNED TO FIT IN STANDARD RAIL)

BEST COPY AVAILABLE

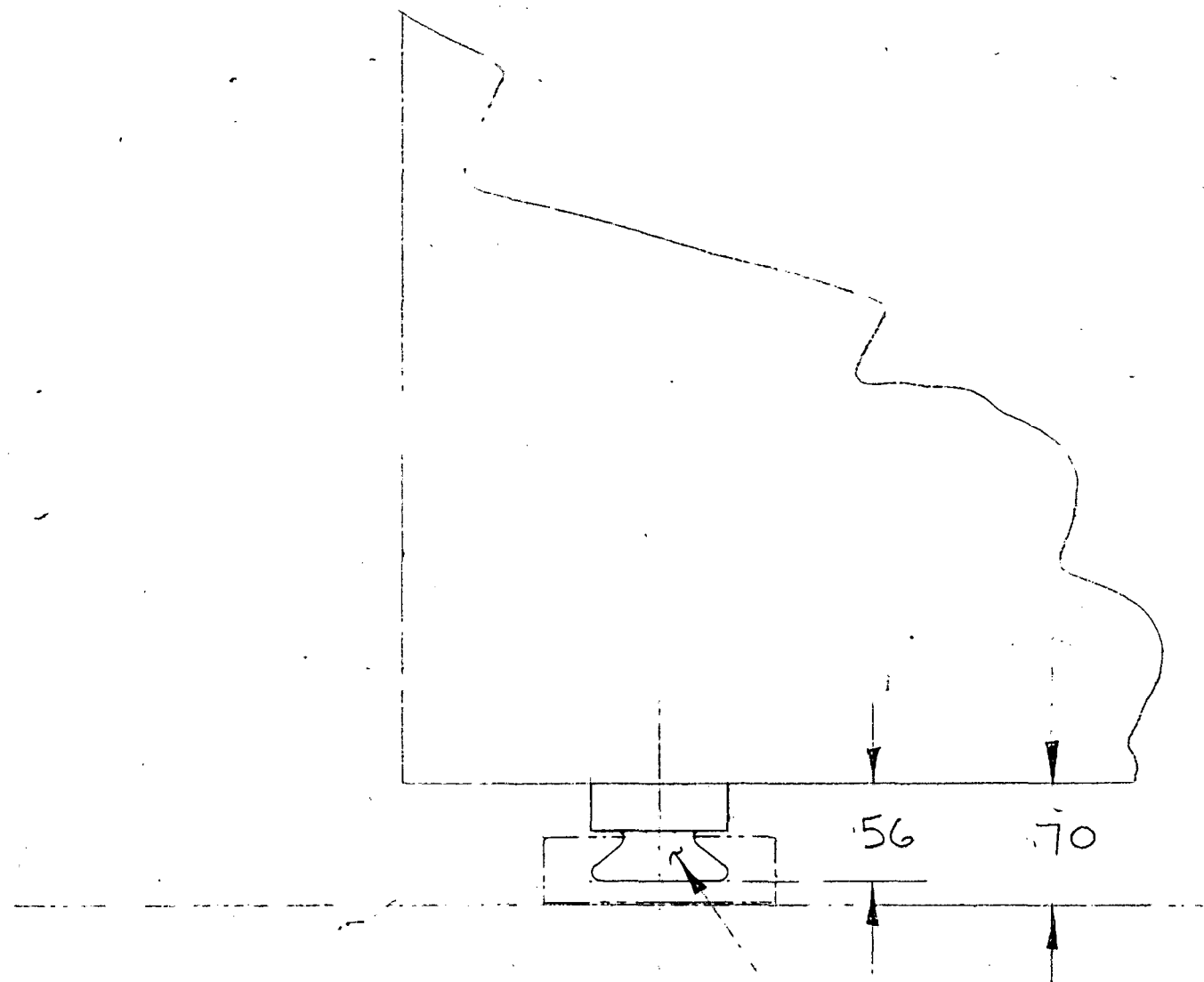
PROVIDE 4, 10/32

12-0
MAX
(REF)

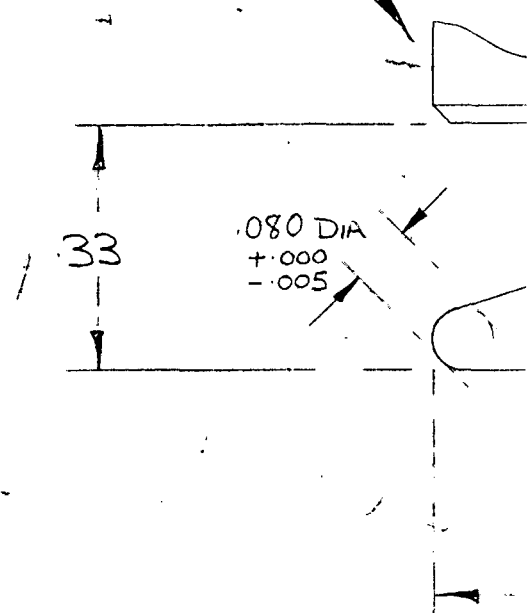
BEST COPY AVAILABLE

PROVIDE 4, 10/32 A

BEST COPY AVAILABLE



DETAIL (0)
(TYP. 4 PLACES)



DETAIL
(DESIGNED TO

BEST COPY AVAILABLE

Blank page