

ONLY
WILL
TO DATE
NOT BE RE...

NUMBER	DASH OR ITEM NO.	DESCRIPTION	SIZE	ZONE	MATERIAL SPEC.	UNIT WT.	NEXT ASSY	QTY PER A/C	MODEL
CES (EXCEPT AS OTHERWISE) ± 1/2° PLACES ± .03 PLACES ± .010 FINISH CEPT AS NOTED RFACE FINISH 30) 1/20	DRAFT	ONE			CANADAIR LIMITED - MONTREAL LID. OF PROPOSED UNDER - FLOOR PASSENGER COMPARTMENT				
	CHECK	LSI Kamm							
	GR. LDR.								
	STRESS								
	WEIGHT								
	SECT. CHIEF								
	APPR.								
APPR.									
							SECTION NO.		
							L66B-30010		

L66B-30010

Page 71
is a duplicate
est un duplicata

L66B-30010	STOCK DISPOSITION SYMBOLS									
	1 REWORK			2 SCRAP			3 NONE			
	REVISIONS			DISP.	REASON	EFF.	CLASS	APPD.		
								DES.	STR.	WTS.
NC										

THI
101

THIS TECHNICAL DATA AND THE DESIGNS DISCLOSED HEREIN ARE THE EXCLUSIVE PROPERTY OF CANADAIR LIMITED AND/OR CONTAIN PROPRIETARY RIGHTS OF OTHERS AND ARE NOT TO BE USED OR DISCLOSED TO OTHERS WITHOUT THE WRITTEN CONSENT OF CANADAIR LIMITED.

R.H.	L.H.	PART NUMBER	DASH OR ITEM No.	DESCRIPTION	SIZE	ZONE	MATERIAL SPEC	UNIT WT.
NO. REQ./ASSY								
HEAT TREAT		TOLERANCES (EXCEPT AS NOTED OTHERWISE) ANGLES $\pm 1/2^\circ$ DECIMALS— 2 PLACES $\pm .03$ 3 PLACES $\pm .010$	DRAFT		CANADAIR LIMITED — MONTREAL 1/19 of Process Draw 11/11/11 PROCESS 1001-87			
FINISH SPEC.			CHECK					
		GR. LDR.						
		STRESS						
		WEIGHT						
		SECT. CHIEF						
SIZE		DWG. SCALE	1/20	APPR.		APPR.		

BAGGAGE CAPACITY

MINIMUM VOLUME (24.4 ft^3) (RED LOADING)	_____	325 LB.
MAXIMUM VOLUME (33.7 ft^3) (ALL COLOURS)	_____	430 LB.

THE ABOVE FIGURES ARE BASED ON A MAX. FLOOR LOADING OF 65 LB/ft^2 AS USED FOR THE UNDERFLOOR BAGGAGE COMP. ON THE CONVAIR 340 MODEL 61.

LIMITATIONS

AS THE FORWARD C.G. POSITION IS CRITICAL THE USE OF THIS BAGGAGE COMPARTMENT MUST BE CONTROLLED BY THE FLIGHT LOADING CONDITION OF THE AIRPLANE AS A WHOLE.

IN THE 27 OR 40-SEATER VERSIONS, WITH FULL PASSENGER LOAD AND ALL EXISTING OVER-FLOOR BAGGAGE SPACE IN USE THE EXTRA UNDERFLOOR SPACE MAY BE USED TO FULL CAPACITY.

FOR THE CARGO VERSION WITH THE 24.4 ft^3 COMPARTMENT, 325 LBS OF BAGGAGE CAN BE CARRIED PROVIDED THERE IS AT LEAST 4,850 LB. OF CARGO EVENLY DISTRIBUTED IN THE MAIN CABIN. WITH THE 33.7 ft^3 COMPARTMENT, 430 LBS. OF BAGGAGE CAN BE CARRIED PROVIDED THERE IS AT LEAST 5,100 LB. OF CARGO EVENLY DISTRIBUTED IN THE MAIN CABIN.

THE LITTER VERSION MUST HAVE AT LEAST 3 PATIENTS IN THE FWD. ROW OF LITTERS BEFORE THE 24.4 ft^3 COMPARTMENT CAN BE FULLY UTILISED AND 6 PATIENTS IN THE FWD ROW OF LITTERS BEFORE THE 33.7 ft^3 COMPARTMENT CAN BE FULLY LOADED.

N.B :- FOR BOTH CARGO & PASSENGER VERSIONS ADDITIONAL BAGGAGE CAN ONLY BE CARRIED AT THE EXPENSE OF FUEL LOAD.

BAGGAGE CAPACITY

MINIMUM VOLUME (24.4 FT³) (RED LOADING)

325 LB

MAXIMUM VOLUME (33.7 FT³) (ALL COLORS)

430 LB

THE ABOVE FIGURES ARE BASED ON A MAX. FLOOR LOADING
OF 65 LB/FT² AS USED FOR THE UNDERFLOOR BAGGAGE COMP.
ON THE CONVAIR 340 MODEL 61.

LIMITATIONS

AS THE FORWARD C.G. POSITION IS CRITICAL THE USE
OF THIS BAGGAGE COMPARTMENT MUST BE CONTROLLED
BY THE FLIGHT LOADING CONDITION OF THE AIRPLANE
AS A WHOLE.

- THIS AREA CAN BE UTILISED
BY RE-ROUTING ELECTRICAL SERVICES.
(VOLUME - .22 FT³)

A/C 4

IT LINED WITH FIBERGLASS SHEET.
FLOOR PANELS; .035 FOR WALLS
/G

AVAILABLE VOLUME

COLOUR CODE	STATION	VOLUME * (FT ³)
RED	109 - 214.5	24.4
GREEN	214.5 - 234.5	7.9
BROWN	176.5 - 214.5	1.2
YELLOW	109 - 125	0.2

* NOTE:- LUGGAGE COMPARTMENT VOLUMES SHOWN
ARE APPROXIMATE & BASED ON A MEAN
CEILING HEIGHT OF 14".

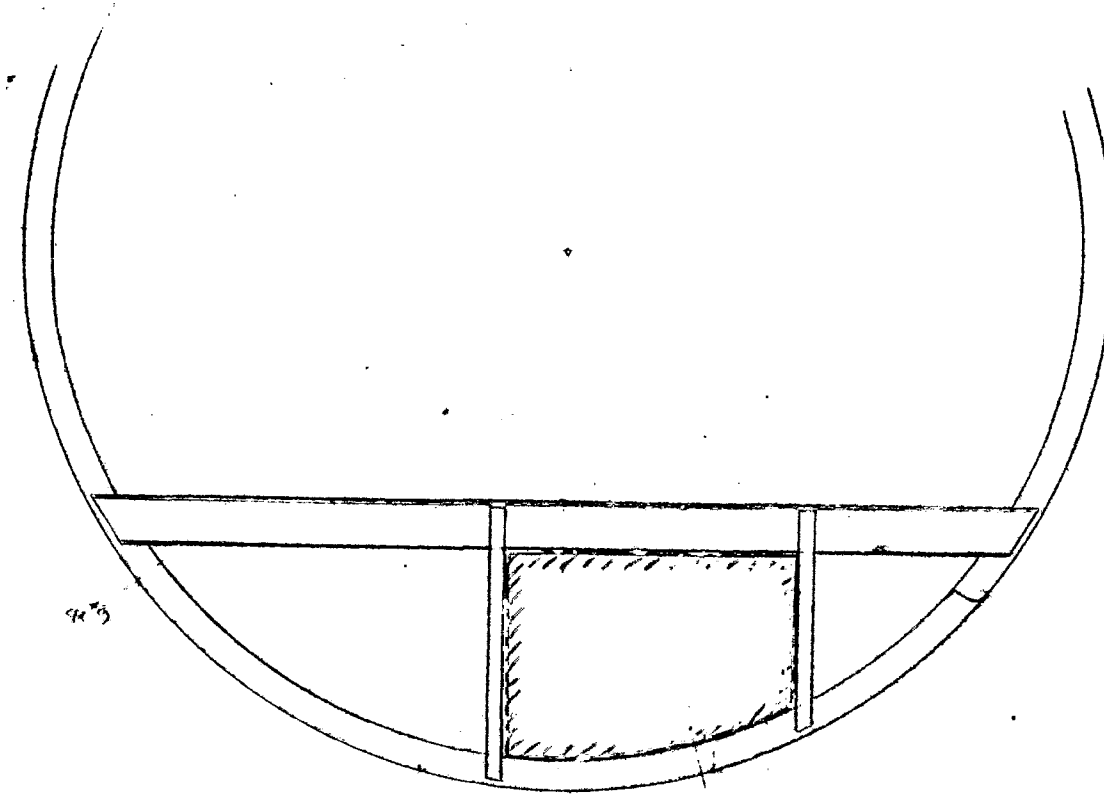
THIS AREA CAN BE UTILISED
BY RE-ROUTING HYDRAULIC
SERVICES (4 PIPES)

VOLUME - 1.2 FT³

- NEW POSITION REQUIRED FOR
AIR TEMPERATURE BULBS (66B-51228)

A/C ϕ

- THIS AREA CAN BE UTILISED
BY RE-ROUTING ELECTRICAL SERVICES.
VOLUME - .22 FT³

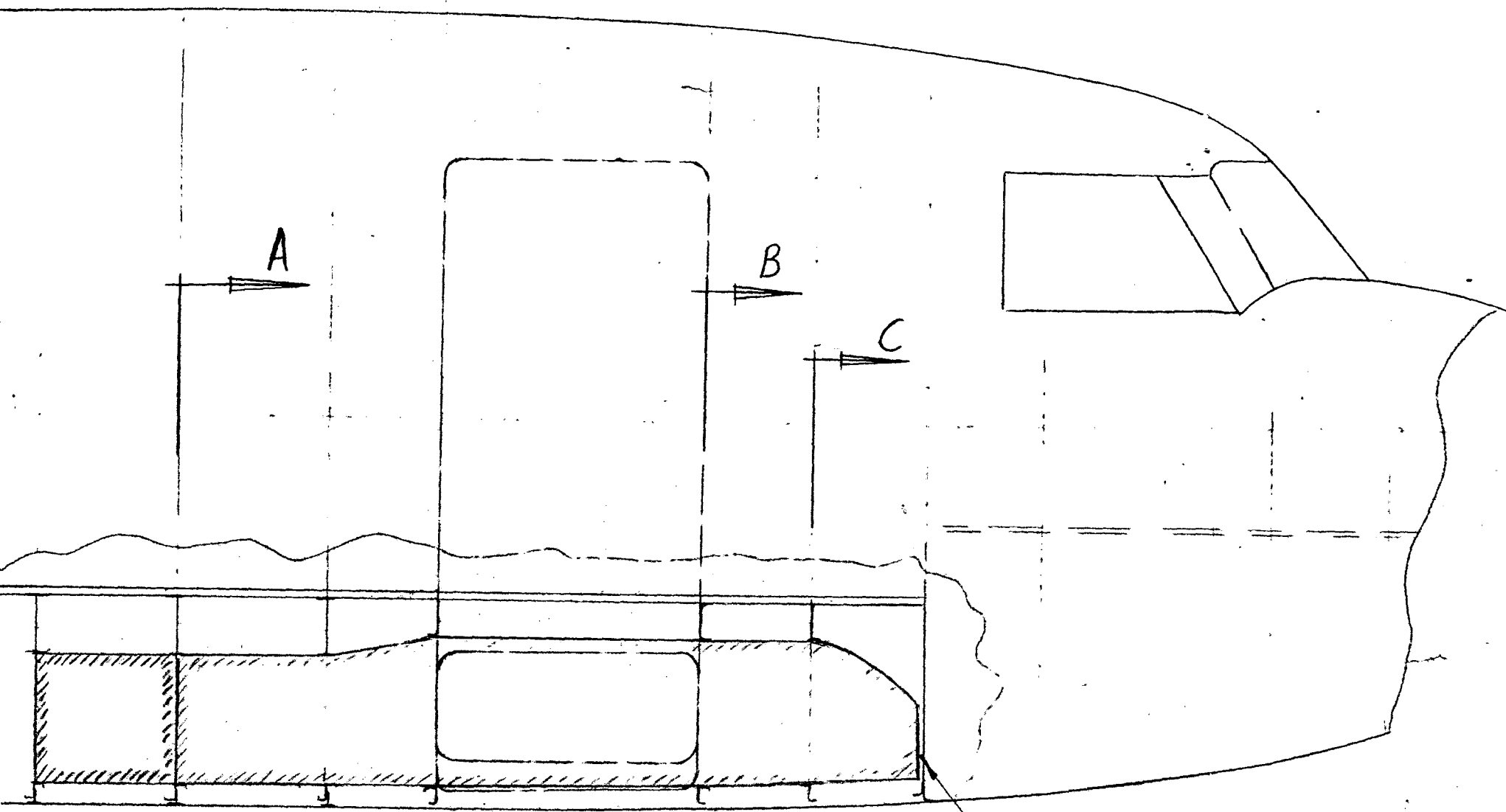


SECTION C-C
(STN 140) (Access door).

COLOUR CODE	STATION	VOLUME * (FT ³)
RED	109 - 214.5	24.4
GREEN	214.5 - 234.5	7.9
BROWN	176.5 - 214.5	1.2
YELLOW	109 - 125	0.2

* NOTE:- LUGGAGE COMPARTMENT VOLUMES
ARE APPROXIMATE & BASED ON A
CEILING HEIGHT OF 14".

- THIS AREA CAN BE UTILIZED
BY RE-ROUTING ELECTRICAL SERVICES.
(VOLUME - .22 FT³)



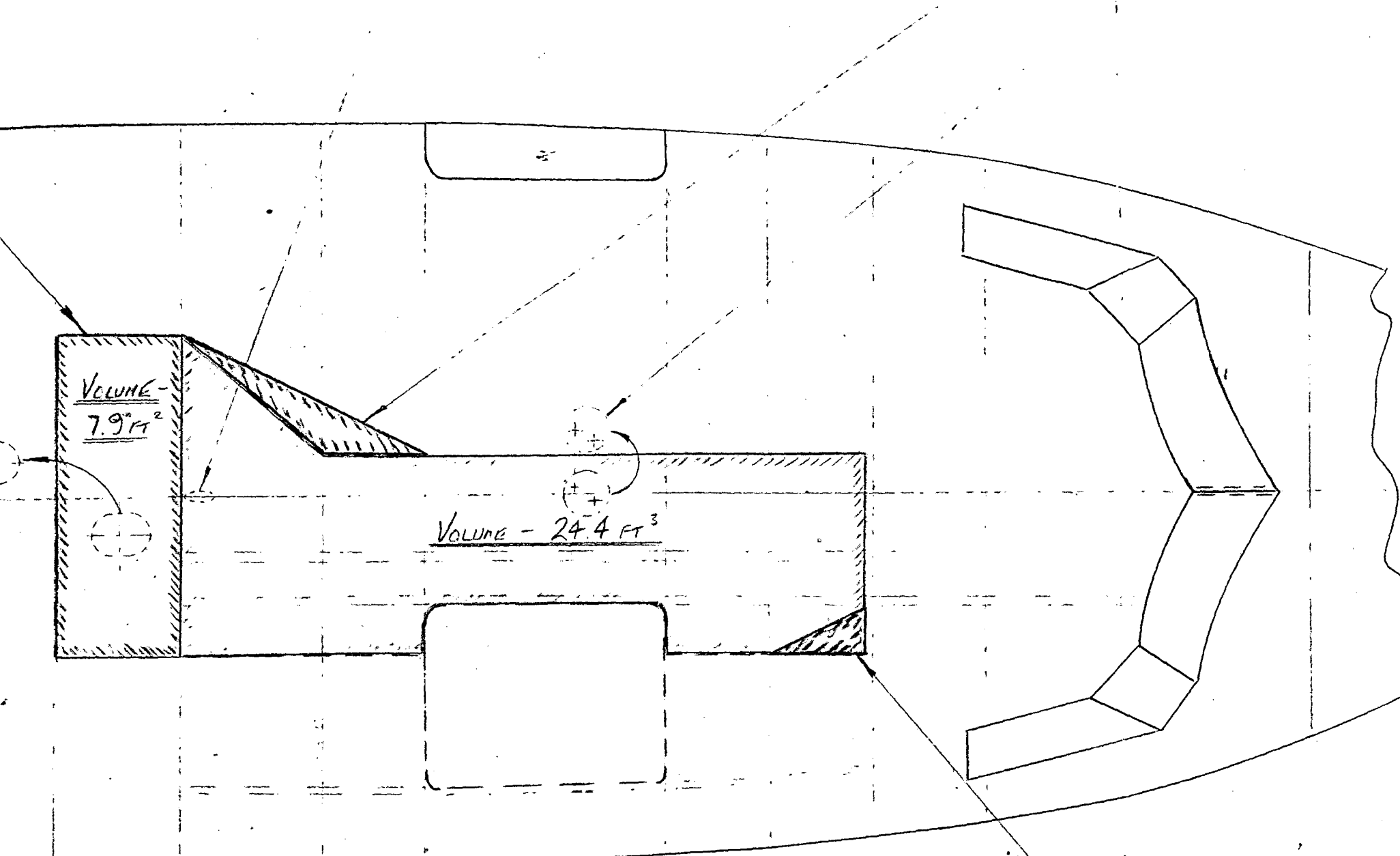
A/C 4



COMPARTMENT LINED WITH FIBERGLASS SHEET.
.050 FOR FLOOR PANELS; .035 FOR WALLS
& CEILING

AVAILABLE VOLUME

COLOUR CODE	STATION	VOLUME * (FT ³)
RED	109 - 214.5	24.4
GREEN	214.5 - 234.5	7.9



VOLUME -
7.9 FT²

VOLUME - 24.4 FT³

A/C &

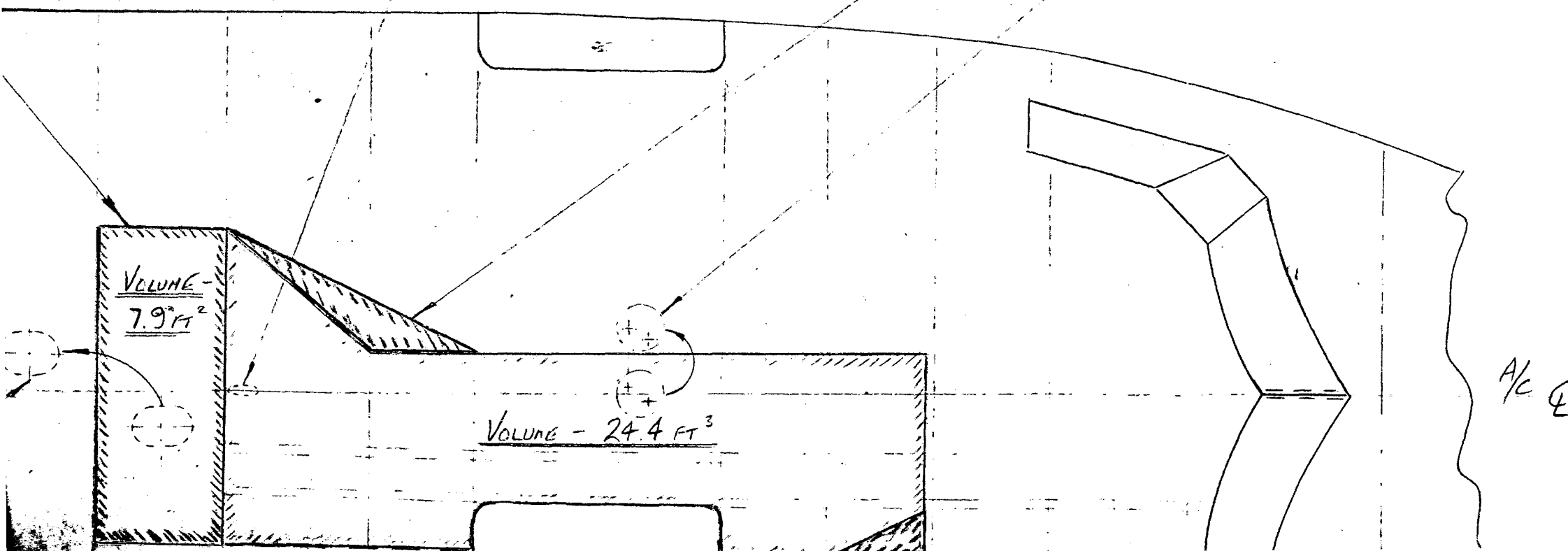
STA. 234.5 STA. 214.5 STA. 193 STA. 176.5 STA. 140 STA. 125 STA. 109

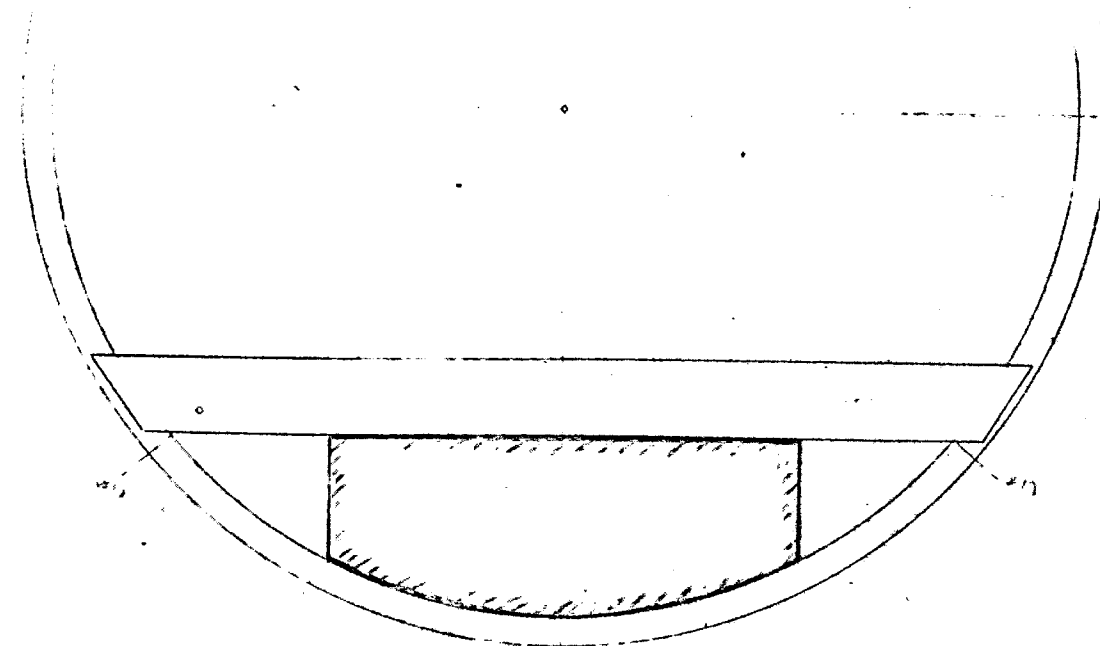
- THIS AREA CAN BE UTILIZED
BY RE-ROUTING ELECTRICAL SERVICES.
(VOLUME - .22 FT³)

THIS AREA CAN BE UTILISED
BY RE-ROUTING HYDRAULIC
SERVICES (4 PIPES)
VOLUME - 1.2 FT³

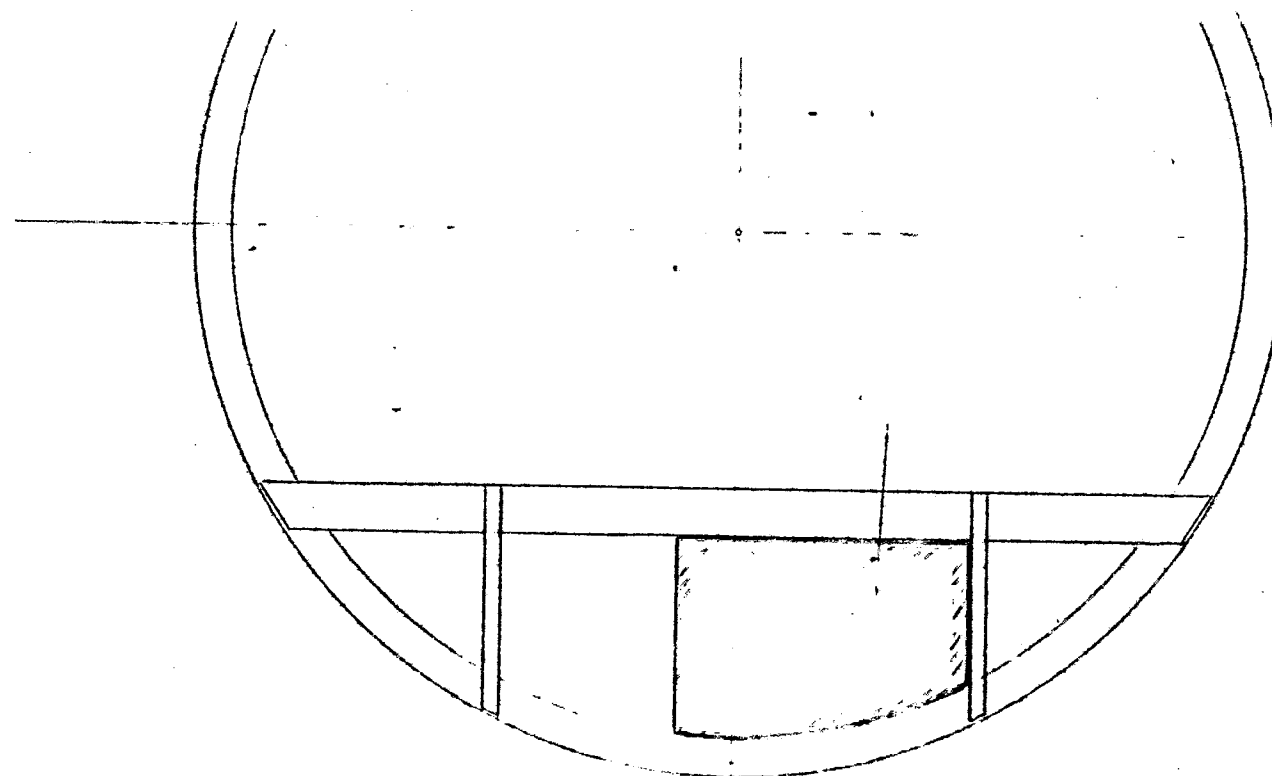
V.H.F. ANTENNA POSITION
SPACE PROVISION NOT USED
ON EXISTING A/C.
(ANTENNA COULD BE INSTALLED
WITH LUGGAGE COMP. FLOOR IN PLACE)

- NEW POSITION REQUIRED FOR
AIR TEMPERATURE BULBS (66B-51228)

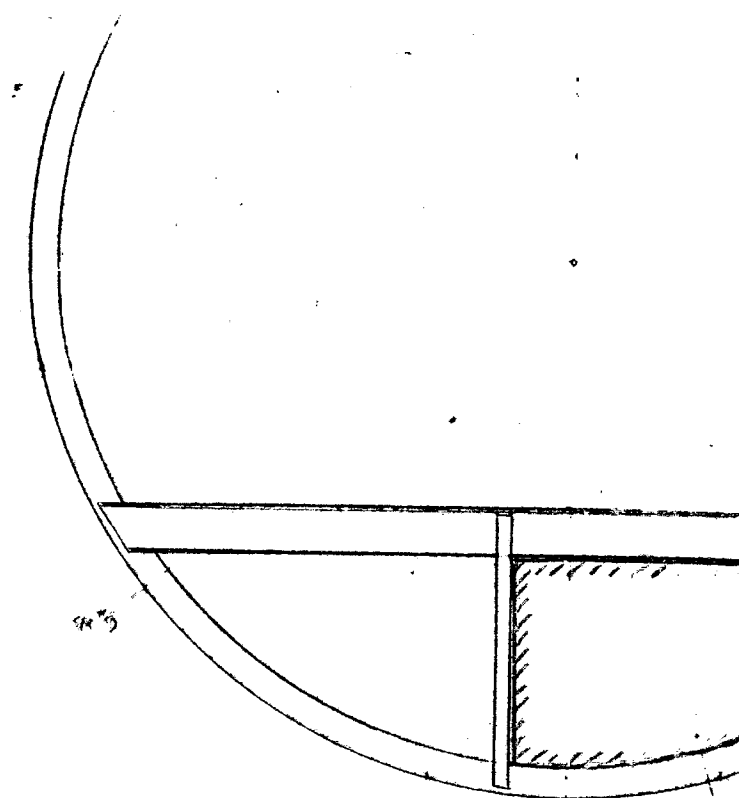




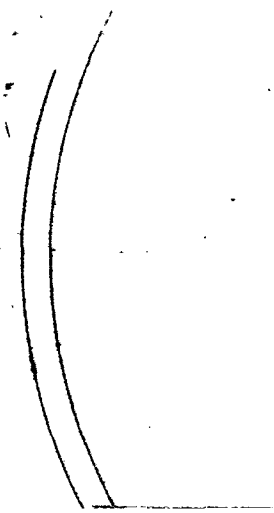
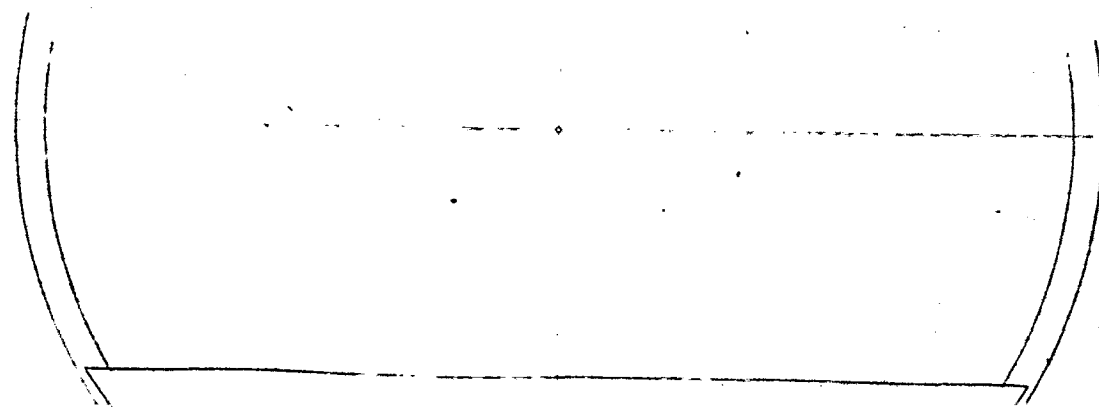
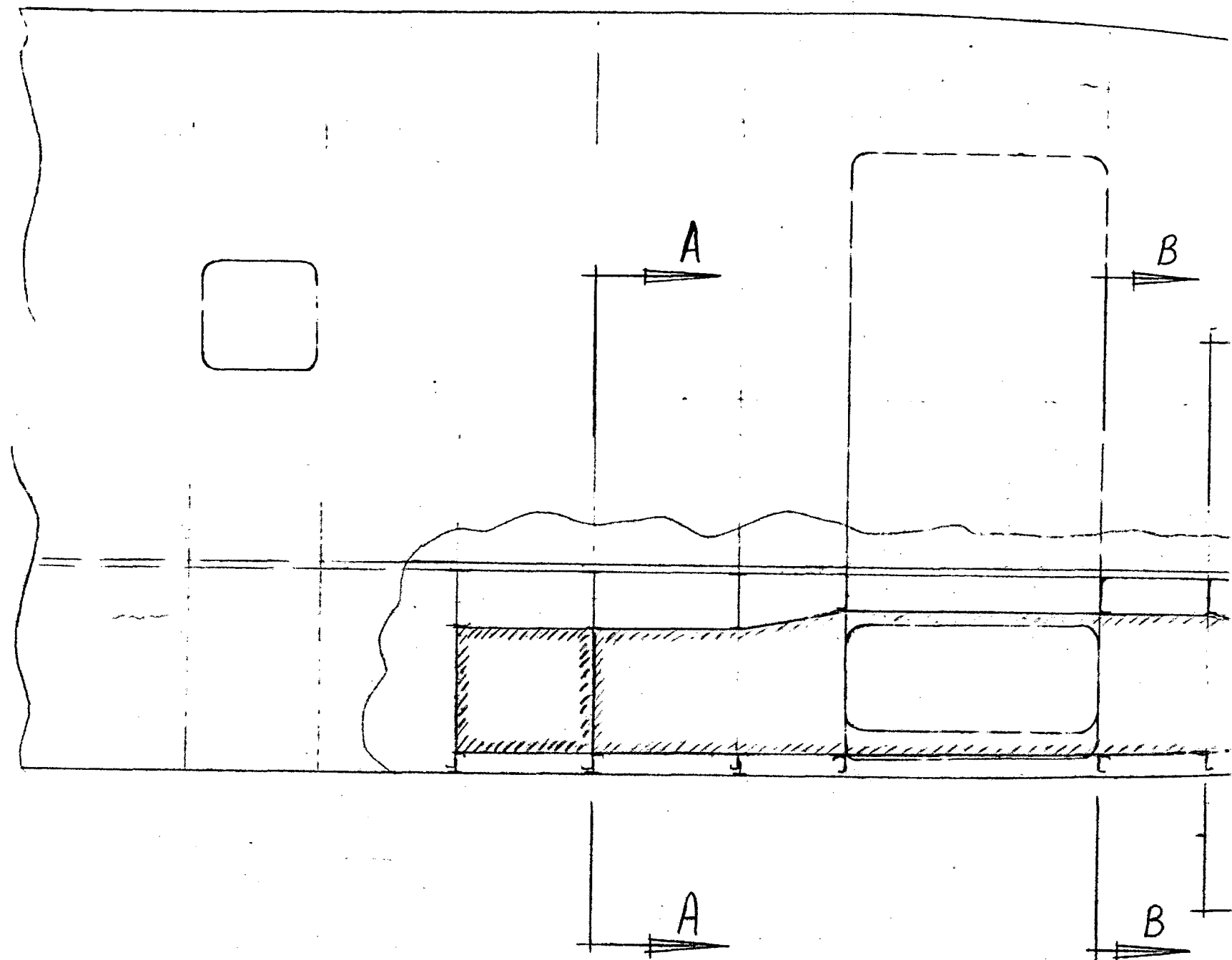
SECTION A-A
(STN 2145)

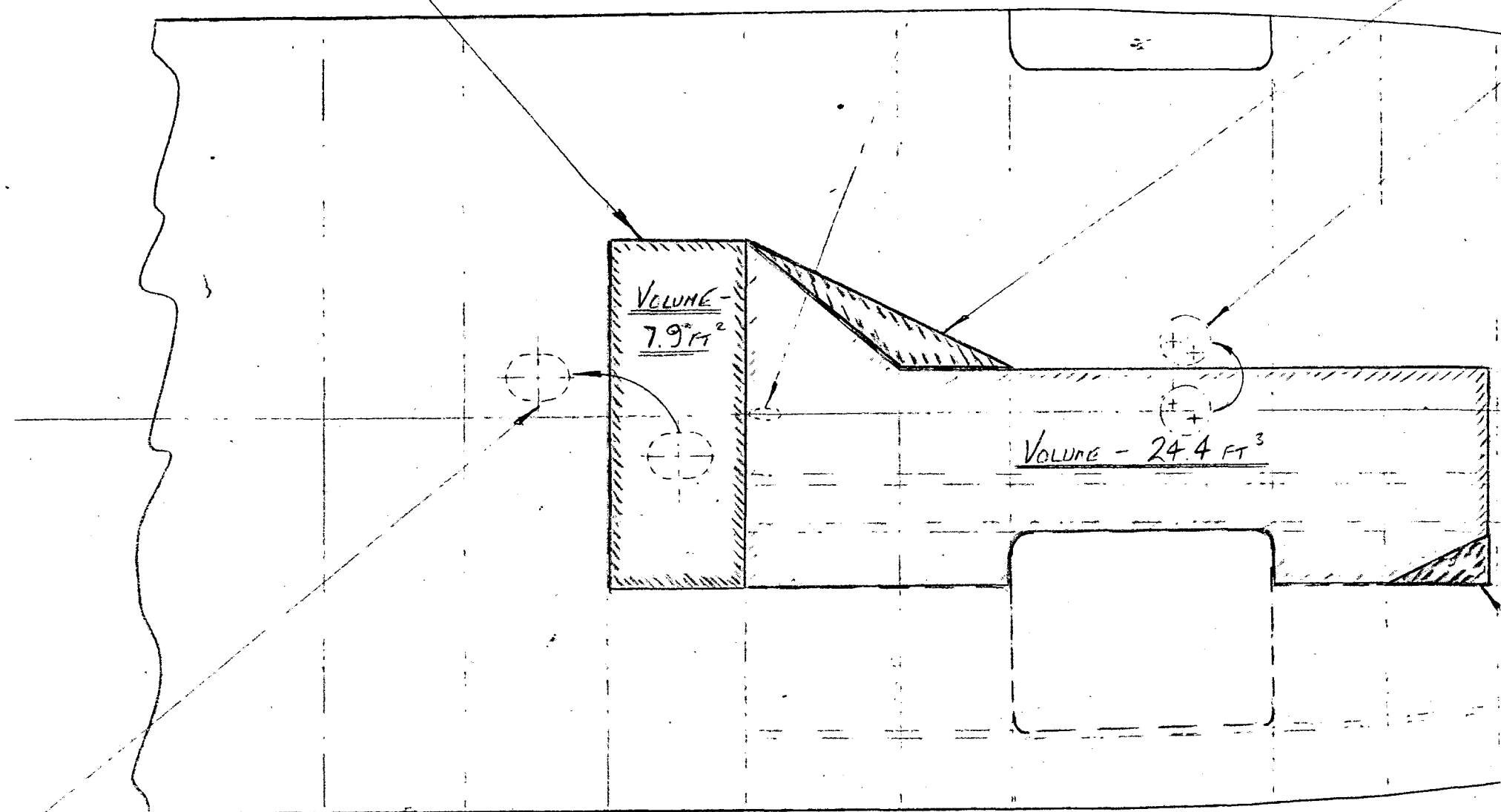


SECTION B-B
(STN 125)



SECTION C-C
(STN 140)





NEW POSITION FOR WATER TANK FILLER
- FRONT TOILET (668-30006)

STA.	STA.	STA.	STA.	STA.	STA.	STA.
234.5	214.5	193	176.5	140	125	10

* THIS AREA CAN BE UTILISED
BY RE-POSITIONING THE TANK
FILLER-FRONT TOILET

- V.H.F. ANTENNA POSITION.
SPACE PROVISION NOT USED
ON EXISTING A/K.
(ANTENNA COULD BE INSTALLED
WITH LUGGAGE COMP. FLOOR)

