

**Department of National Defence
Canadian Forces
BUSINESS CONTINUITY PLAN**

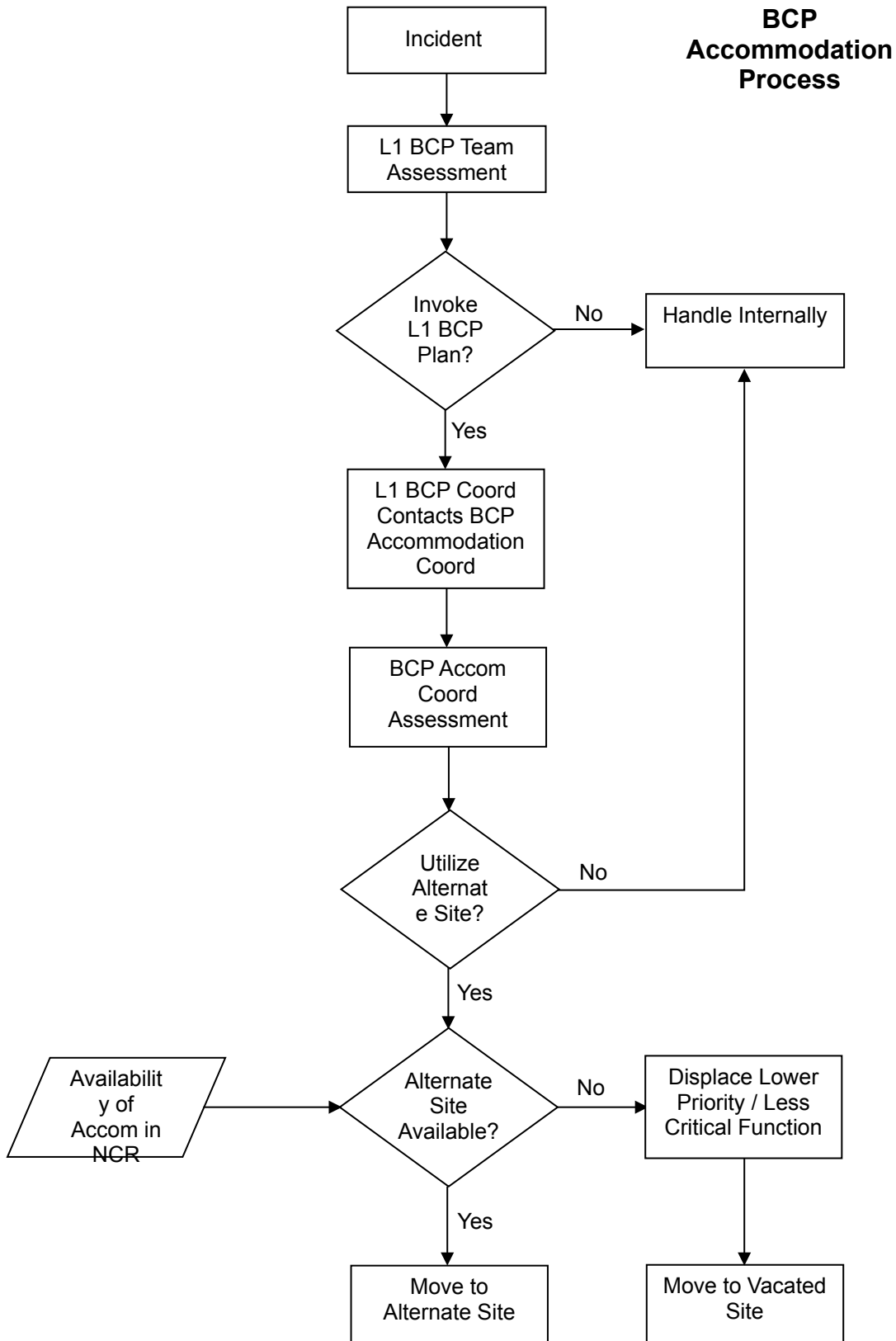
Annex D

Appendix 1

BCP Accommodation

DRAFT

Version 2b
4 February 09



BCP ALTERNATE ACCOMMODATION REQUIREMENTS

Level 1 / Group Principal	Alternate Location	Personnel	Total Work Stations	Offices	Cubicles	Telework
MND	Parliament Hill?					
CDS	Mobile/NDCC?					
DM	NDCC?					
VCDS	Bldg 347 at Uplands	118	118			
ADM (Fin CS)	66 Slater	3	3	1	2	
ADM (Policy)	<i>not indicated</i>	38	38	15	23	
ADM (IM)	<i>not indicated</i>	<i>not indicated</i>				
ADM (HR-Civ)	LaBelle/Sacre Coeur	28	28	5	42	
ADM (IE)	Pearkes	3	3	3	0	
ADM (Mat)						
DCOS (Mat), DMGSP, DGProcS	60 Queen St.	12	12	4	6	
DGCPD (A) / (L&S), DAER / DAER4	Hotel de Ville	4	4	2	2	
DGLEPM, DGMEPM, DGMSSC	Louis St. Laurent	16	16	13	8	
DGAEPM	400 Cumberland	6	6	2	4	
DGIIP	Pearkes	2	2	1	1	
ADM(Mat) Sub Total		40	40	22	21	
ADM (S&T)	305 Rideau	20	10	1	9	
ADM (PA)	45 Sacre Coeur	18	18			
JAG DJAG/Ops	NDCC, Constitution	6	6	6	0	
DJAG/MJAL DJAG/REG Svc - Ottawa	Pearkes	15	15	11	4	
JAG Sub Total		21	21	17	4	
CRS	Gillin Building	2	2	1	1	
CRS-DSEI	<i>not indicated</i>	3	1	1		
Principal, DND/CF OAG Liaison	<i>not indicated</i>	4	4	3	1	
CRS Sub Total		9	7	5	2	
Canada Command	J3 & J4	<i>not indicated</i>				
CANOSCOM	not indicated	70	70	70		
CEFCOM	Joint HQ Kingston	<i>not indicated</i>				
CMS	not indicated					
CLS	not indicated					
CAS	not indicated					
CMP	Coventry Building	25	25	2	23	
CDI	Kingston	119	<i>not indicated</i>			
Totals		484	381	141	84	0